

WWW.INTELLIPROBE.NET
intelliprobe

**YOUR SOLUTION
FOR METER READING**



PRODUCT CATALOG

ABOUT US

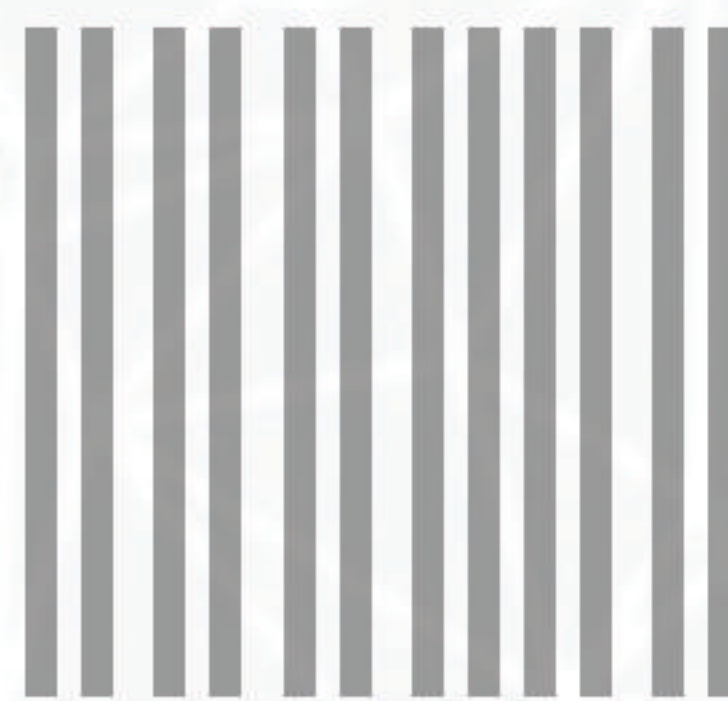
Intelliprobe is a U.S. technology company that designs and manufactures optical probes for reading and programming ANSI and IEC electric meters. Our company was founded in 2010 with one purpose in mind: to provide high-quality products, services, and support to customers in the utility meter reading industry.

As a small business, we aspire and strive to expand our presence in the market and are committed to maintaining excellence, respect, and integrity as the principles that define our company.

We have renewed our goal to continuously improve and discover new opportunities for growth. At the center of our efforts is the desire to evolve in an industry that is greatly challenging and highly-competitive. We understand that the future of our company depends hugely on our customers, and as a result, we intend to keep nurturing the relationships that have made and continue to make our progress possible.



TABLE OF CONTENTS



WIRELESS (BLUETOOTH) OPTICAL PROBES [3]

OPTICAL PROBES FOR HANDHELDS

•ANSI..... [4-7]

•IEC..... [8]

•DUAL ANSI/IEC..... [9]

OPTICAL PROBES FOR PC'S

•ANSI..... [10-12]

•IEC..... [13]

•DUAL ANSI/IEC..... [14]

METER READING..... [15]

ACCESSORIES & OTHER PRODUCTS..... [16]





WIRELESS (BLUETOOTH) OPTICAL PROBES

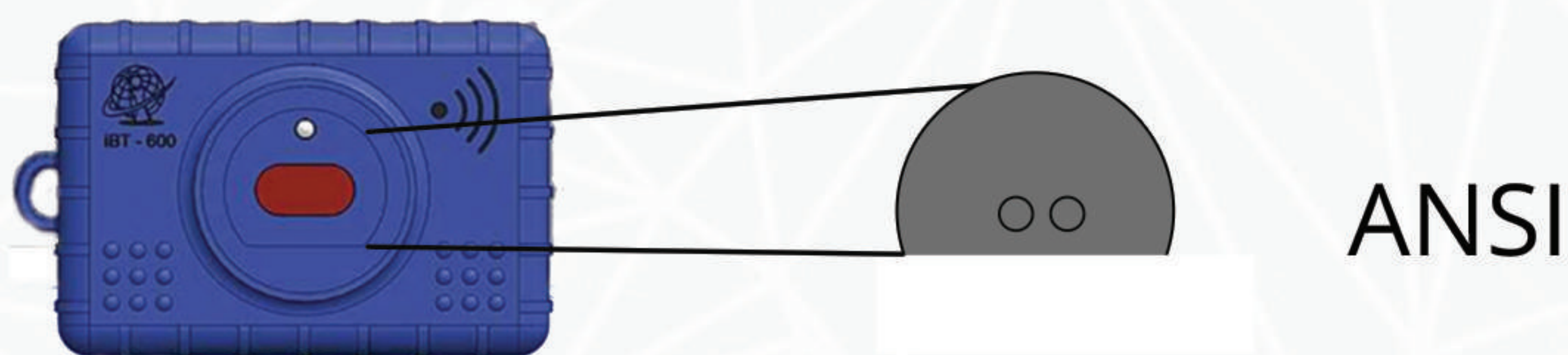
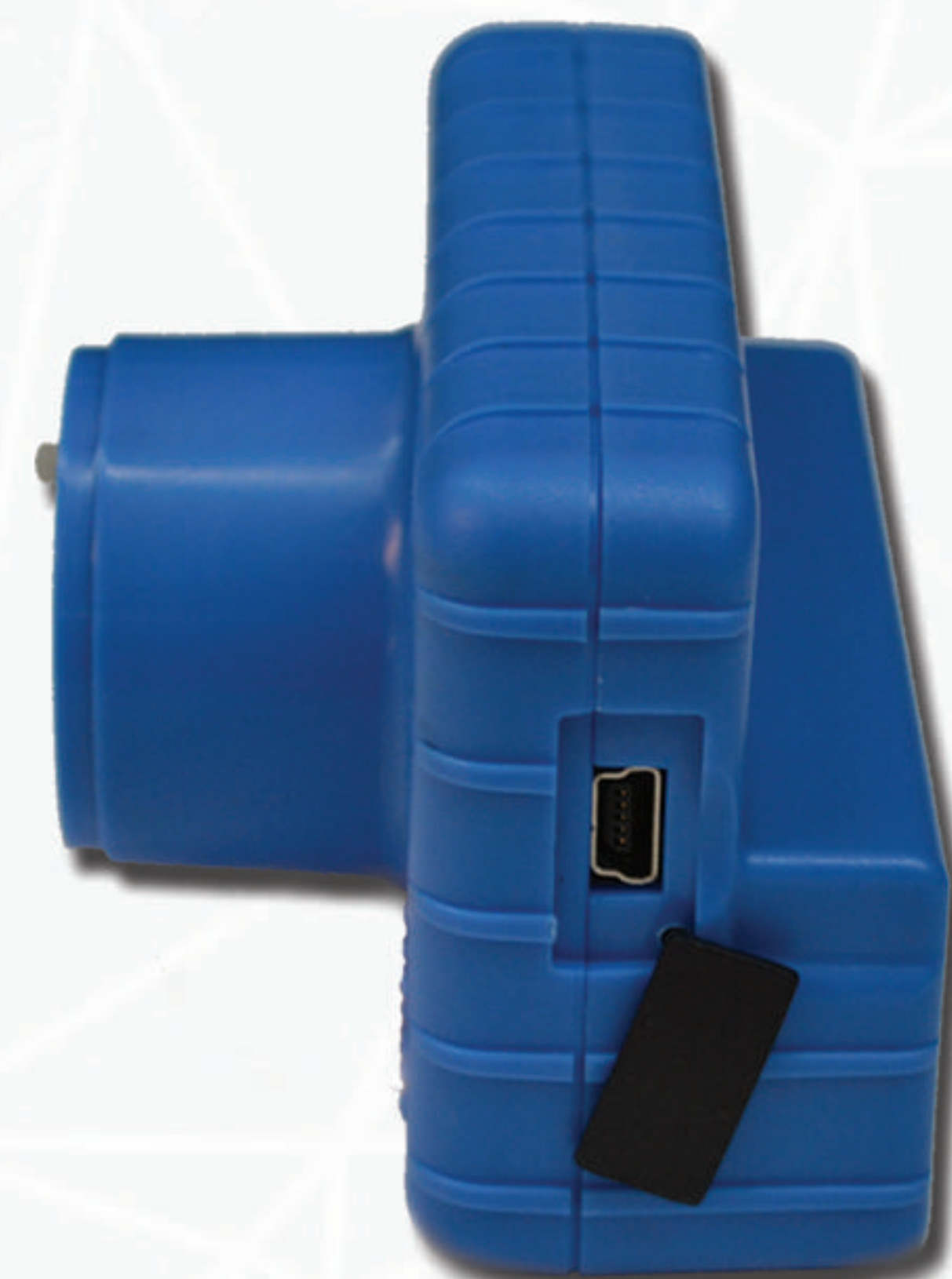
3

The NEW Intelliprobe iBT-600 Bluetooth Optical probe is designed for reading and programming both ANSI and IEC electric meters using devices, handhelds or laptop PC's equipped with Bluetooth wireless connectivity. The iBT-600 Optical probe eliminates the use of interface cables between the meter and the handheld or PC as it provides a WIRELESS solution to collect data from the meters.

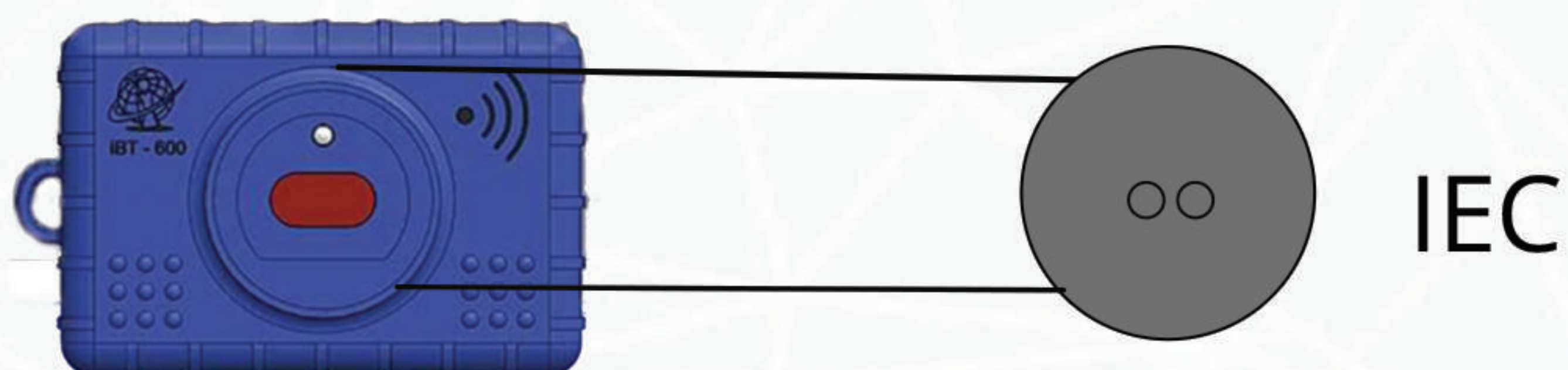
iBT-600 Dual ANSI / IEC Bluetooth Optical Probe

FEATURES:

- Works with integrated Bluetooth Handhelds and PC's
- Bluetooth Class 2
- ANSI C12.18-2006 and IEC 62056-21 (IEC 1107) compatible design
- Operating range up to 20 meters
- Rechargeable 'AA' NiMH Battery
- Baud rate speed up to 9600 baud
- Powerful Magnetic Retention
- Loop for attaching key ring or belt clip



ANSI



IEC



intelliprobe WWW.INTELLIPROBE.NET



Our universal optical probes can be configured to interface with virtually any handheld computer in the market. Some of these applications include Itron FC200/FC300 HH, Honeywell Dolphin 9900/99EX HH, Intermec CK60/61 HH, Radix FW60 HH, DAP Technologies Microflex 9500/9800 HH and others. The iP501 Series are designed with a new, smaller housing made with Polycarbonate and Fiber Glass reinforcement. The iP500 Series are designed with aluminum housing. Below are some of our most popular models but other configurations are available on request.

iP501-124 'ANSI' ANSI Optical Probe



FEATURES:

- Designed for Itron G5, FC200, FC300 handhelds
- ANSI C12.18-2006 compatible design
- Polycarbonate housing design with Glass Fiber reinforcement
- Compatible with virtually all ANSI utility meters and registers
- 18" Coiled cable, rugged gray Polyurethane extends to 10 Feet
- +5V DC Operating voltage (from handheld's RS232 port)
- Baud rate speed up to 19,200 baud
- 12-Pin Hirose connector
- Powerful magnetic retention

FEATURES:

- Designed for Honeywell Dolphin 9900 handhelds
- ANSI C12.18-2006 compatible design
- Polycarbonate housing design with Glass Fiber reinforcement
- Compatible with virtually all ANSI utility meters and registers
- 18" Coiled cable, rugged gray Polyurethane extends to 10 Feet
- +5V DC Operating voltage (from handheld's RS232 port)
- Baud rate speed up to 19,200 baud
- 17-Pin Male connector
- Powerful magnetic retention

iP501-222 'ANSI' ANSI Optical Probe





Our universal optical probes can be configured to interface with virtually any handheld computer in the market. Some of these applications include Itron FC200/FC300 HH, Honeywell Dolphin 9900/99EX HH, Intermec CK60/61 HH, Radix FW60 HH, DAP Technologies Microflex 9500/9800 HH and others. The iP501 Series are designed with a new, smaller housing made with Polycarbonate and Fiber Glass reinforcement. The iP500 Series are designed with aluminum housing. Below are some of our most popular models but other configurations are available on request.

iP501-222 2S 'ANSI' ANSI Optical Probe



FEATURES:

- Designed for Honeywell Dolphin 9900 handhelds
- ANSI C12.18-2006 compatible design
- Polycarbonate housing design with Glass Fiber reinforcement
- Compatible with virtually all ANSI utility meters and registers
- Straight cable, 2 meters long, rugged gray Polyurethane
- +5V DC Operating voltage (from handheld's RS232 port)
- Baud rate speed up to 19,200 baud
- 17-Pin Male connector
- Powerful magnetic retention

FEATURES:

- Designed for Honeywell Dolphin 99EX handhelds
- ANSI C12.18-2006 compatible design
- Polycarbonate housing design with Glass Fiber reinforcement
- Compatible with virtually all ANSI utility meters and registers
- Straight Cable, 2 meters long, Black PVC, Cup Assembly
- +5V DC Operating voltage (from handheld's RS232 port)
- Baud rate speed up to 19,200 baud
- 18-Pin PDT connector
- Powerful magnetic retention

iP501-224 'ANSI' ANSI Optical Probe





Our universal optical probes can be configured to interface with virtually any handheld computer in the market. Some of these applications include Itron FC200/FC300 HH, Honeywell Dolphin 9900/99EX HH, Intermec CK60/61 HH, Radix FW60 HH, DAP Technologies Microflex 9500/9800 HH and others. The iP501 Series are designed with a new, smaller housing made with Polycarbonate and Fiber Glass reinforcement. The iP500 Series are designed with aluminum housing. Below are some of our most popular models but other configurations are available on request.

iP500-106 ANSI Optical Probe



FEATURES:

- Designed for Radix FW60 handhelds
- ANSI C12.18-2006 and GE OPTOCOM compatible design
- Aluminum housing design with Clear or Hard Black Anodize coating
- Compatible with virtually all ANSI utility meters and registers
- 18" Coiled cable, rugged gray Polyurethane extends to 10 Feet
- +5V DC Operating voltage (from handheld's RS232 port)
- Baud rate speed up to 19,200 baud

FEATURES:

- Designed for Itron G5, FC200, FC300 handhelds
- ANSI C12.18-2006 and GE OPTOCOM compatible design
- Aluminum housing design with Clear or Hard Black Anodize coating
- Compatible with virtually all ANSI utility meters and registers
- 18" Coiled cable, rugged gray Polyurethane extends to 10 Feet
- +5V DC Operating voltage (from handheld's RS232 port)
- Baud rate speed up to 19,200 baud
- 12-Pin Hirose connector
- Powerful magnetic retention

iP500-124 ANSI Optical Probe





Our universal optical probes can be configured to interface with virtually any handheld computer in the market. Some of these applications include Itron FC200/FC300 HH, Honeywell Dolphin 9900/99EX HH, Intermec CK60/61 HH, Radix FW60 HH, DAP Technologies Microflex 9500/9800 HH and others. The iP501 Series are designed with a new, smaller housing made with Polycarbonate and Fiber Glass reinforcement. The iP500 Series are designed with aluminum housing. Below are some of our most popular models but other configurations are available on request.

iP500-212 ANSI Optical Probe

FEATURES:

- Designed for DAP Microflex PC9500 / 9800 and CE5000 handhelds
- ANSI C12.18-2006 and GE OPTOCOM compatible design
- Aluminum housing design with Clear or Hard Black Anodize coating
- Compatible with virtually all ANSI utility meters and registers
- 18" Coiled cable, rugged gray Polyurethane extends to 10 Feet
- +5V DC Operating voltage (from handheld's RS232 port)
- Baud rate speed up to 19,200 baud
- 7-Pin LEMO, Right-Angle, male connector
- Powerful magnetic retention





iP300-124 IEC Only Optical Probe

FEATURES:

- Designed for Itron G5, FC200, FC300 handhelds
- IEC 62056-21 (IEC 1107) compatible design
- Aluminum housing design with Hard Black Anodize coating
- Compatible with virtually all IEC utility meters and registers
- 18" Coiled cable, rugged Gray Polyurethane extends to 10 Feet
- +5V DC Operating voltage (from handheld's RS232 port)
- Baud rate speed up to 19,200 baud
- 12-Pin Hirose connector
- Powerful magnetic retention



****NOTE:** Other configurations available upon request.



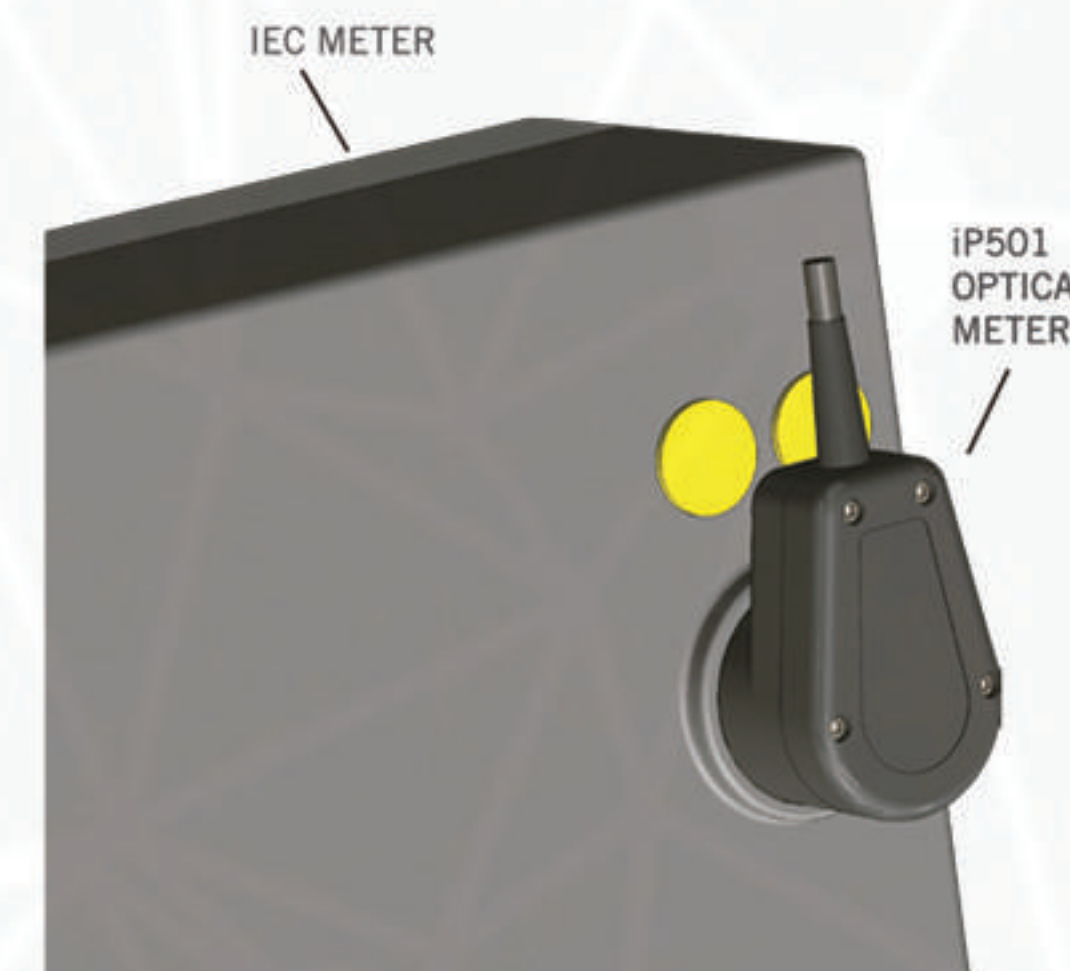
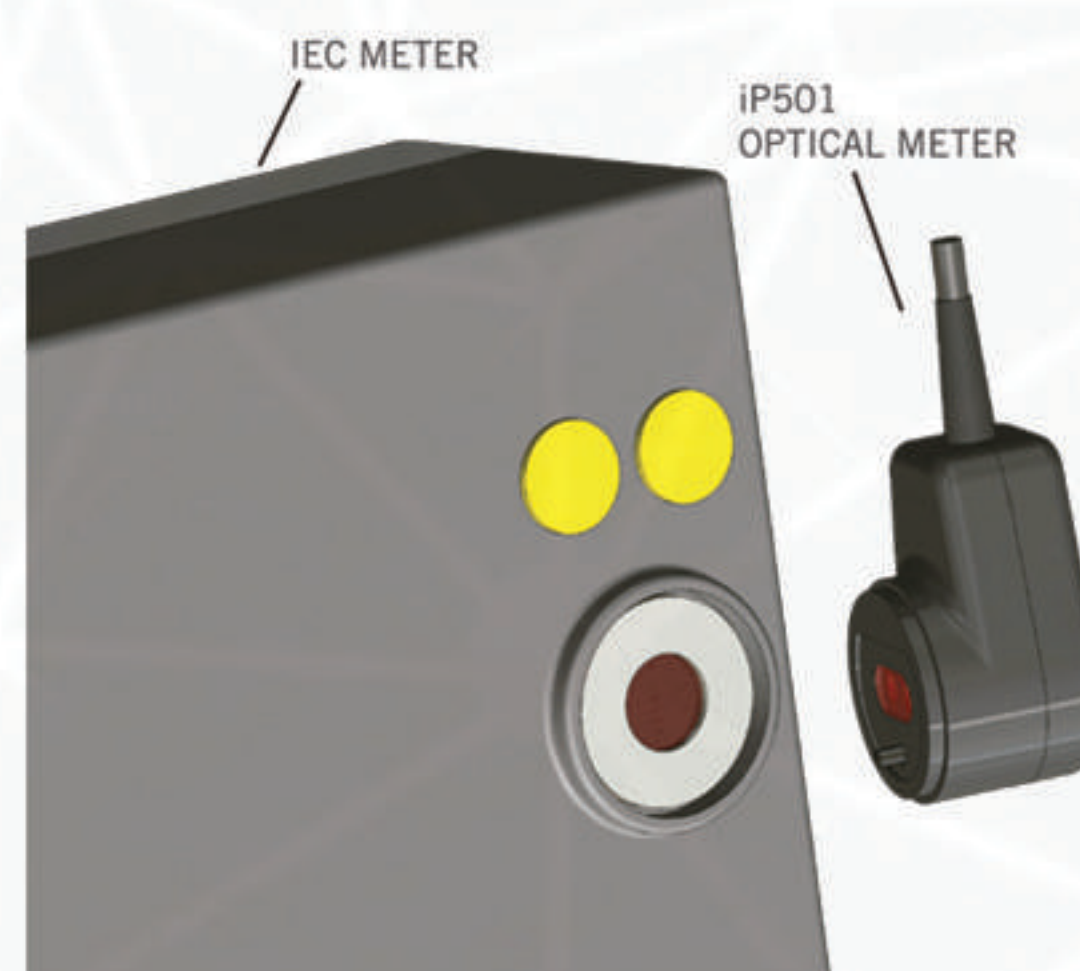
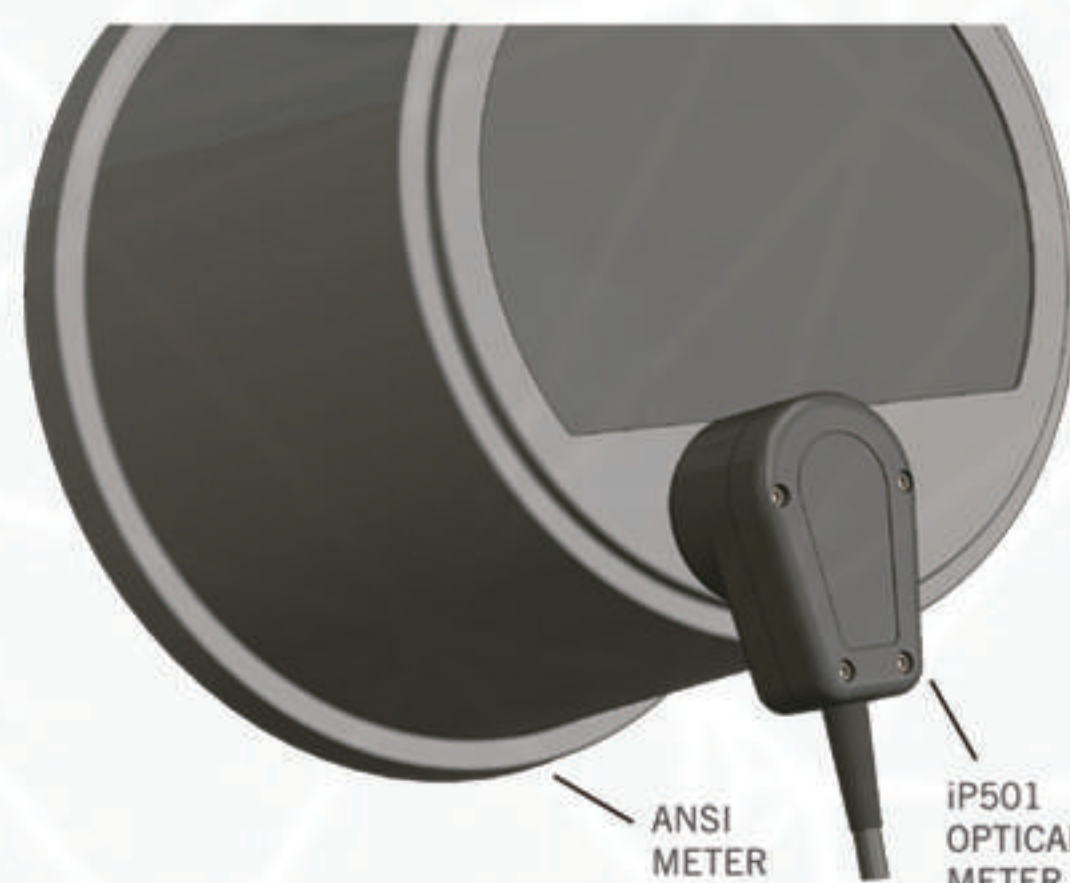
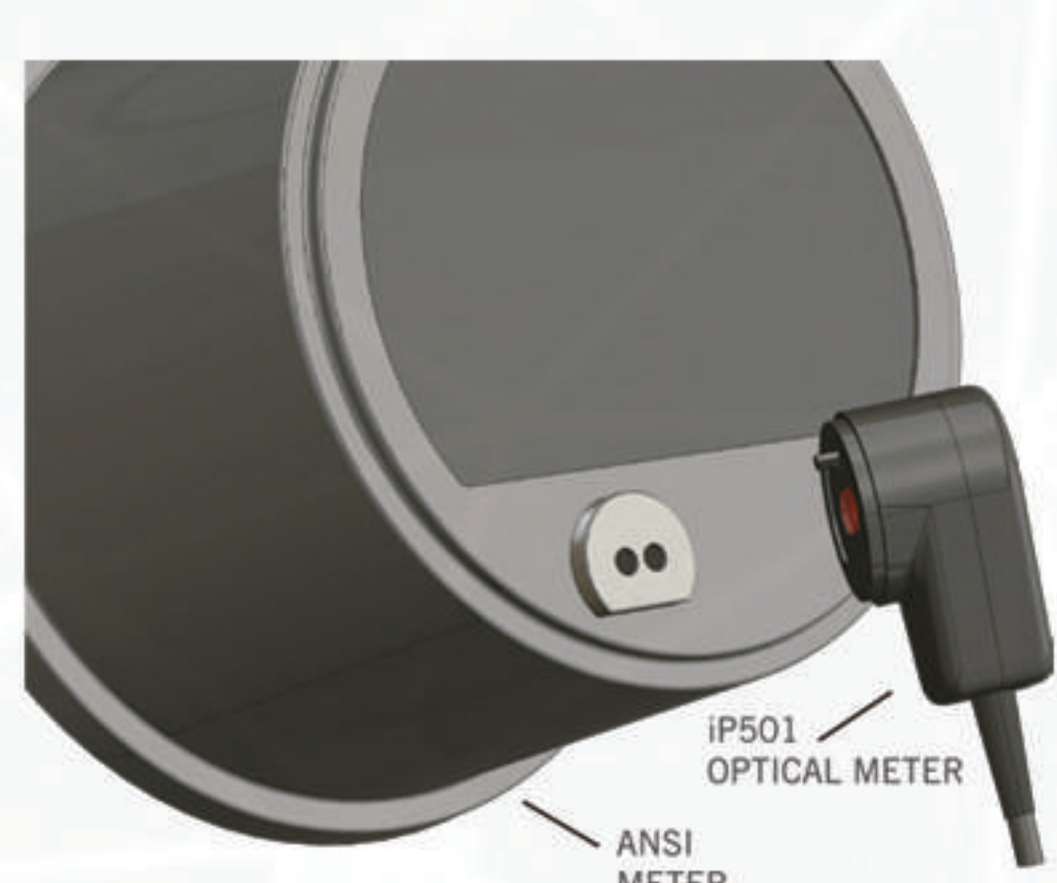


DUAL ANSI/IEC

OPTICAL PROBES

9

The DUAL ANSI/IEC Optical probes are our latest series of optical probes that can be used on both ANSI or IEC electric meters. With this probe design, there is no need to carry 2 different optical probes in the field for reading and programming meters that employ ANSI and IEC optical ports. See 'Meter Attachment Illustration' below:



iP501-124 Dual ANSI / IEC Optical Probe

FEATURES:

- Designed for Itron G5, FC200, FC300 handhelds
- ANSI C12.18-2006 and IEC 62056-21 (IEC 1107) compatible design
- Polycarbonate housing design with Glass Fiber reinforcement
- Compatible with virtually all ANSI and IEC utility meters and registers
- 18" Coiled cable, rugged Gray Polyurethane extends to 10 Feet
- +5V DC Operating voltage (from handheld's RS232 port)
- Baud rate speed up to 19,200 baud
- 12-Pin Hirose connector
- Powerful magnetic retention



intelliprobe

WWW.INTELLIPROBE.NET



Our universal optical probes can also be configured to interface with Desktop and Laptop PC computers as well as tablets through their SERIAL/RS232 or USB communication ports. Again, we also configure these models in both types of housings: Polycarbonate (iP501 Series) and Aluminum (iP500 Series). Below are some of these models.

iP501-300 'ANSI' RS232 Optical Probe



FEATURES:

- Designed for Desktop and Laptop PC's
- USB 2.0 communication
- ANSI C12.18-2006 compatible design
- Polycarbonate housing design with Glass Fiber reinforcement
- Compatible with virtually all ANSI utility meters and registers
- 18" Coiled cable, rugged gray Polyurethane extends to 10 Feet
- +5V DC Operating voltage (from PC's USB port)
- Baud rate speed up to 19,200 baud
- USB Type A Male connector
- Powerful magnetic retention



FEATURES:

- Designed for Desktop and Laptop PC's
- Serial RS232 communication
- ANSI C12.18-2006 compatible design
- Polycarbonate housing design with Glass Fiber reinforcement
- Compatible with virtually all ANSI utility meters and registers
- 18" Coiled cable, rugged gray Polyurethane extends to 10 Feet
- +5V DC Operating voltage (from PC's USB or PS/2 port)
- Baud rate speed up to 19,200 baud
- 9-Pin D-Sub Female connector and USB Type A for Power
- Powerful magnetic retention

iP501-330 'ANSI' USB Optical Probe





Our universal optical probes can also be configured to interface with Desktop and Laptop PC computers as well as tablets through their SERIAL/RS232 or USB communication ports. Again, we also configure these models in both types of housings: Polycarbonate (iP501 Series) and Aluminum (iP500 Series). Below are some of these models.

iP501-330 2s 'ANSI' USB Optical Probe



FEATURES:

- Designed for Desktop and Laptop PC's
- USB 2.0 communication
- ANSI C12.18-2006 compatible design
- Polycarbonate housing design with Glass Fiber reinforcement
- Compatible with virtually all ANSI utility meters and registers
- Straight Cable, PVC, Black or Gray, 6 Feet long
- +5V DC Operating voltage (from PC's USB port)
- Baud rate speed up to 19,200 baud
- 9-Pin D-Sub Female connector
- Powerful magnetic retention

FEATURES:

- Designed for Desktop and Laptop PC's
- Serial RS232 communication
- ANSI C12.18-2006 and GE OPTOCOM compatible design
- Aluminum housing design with Clear or Hard Black Anodize coating
- Compatible with virtually all ANSI utility meters and registers
- 18" Coiled cable, rugged gray Polyurethane extends to 10 Feet
- +5V DC Operating voltage (from PC's USB or PS/2 port)
- Baud rate speed up to 19,200 baud
- 9-Pin D-Sub Female connector and USB Type A for Power

iP500-300 RS232 Optical Probe





PROBES FOR PC's

Our universal optical probes can also be configured to interface with Desktop and Laptop PC computers as well as tablets through their SERIAL/RS232 or USB communication ports. Again, we also configure these models in both types of housings: Polycarbonate (iP501 Series) and Aluminum (iP500 Series). Below are some of these models.

iP500-302 ANSI RS232 Optical Probe

FEATURES:

- Designed for Desktop and Laptop PC's
- Serial RS232 communication
- ANSI C12.18-2006 and GE OPTOCOM compatible design
- Aluminum housing design with Clear or Hard Black Anodize coating
- Compatible with virtually all ANSI utility meters and registers
- 64" Coiled cable, rugged gray Polyurethane extends to 25 Feet
- +5V DC Operating voltage (from PC's USB or PS/2 port)
- Baud rate speed up to 19,200 baud
- 9-Pin D-Sub Female connector and USB Type A for Power
- Powerful magnetic retention





iP300-300 RS232 Optical Probe



FEATURES:

- Designed for Desktop and Laptop PC's
- Serial RS232 communication
- IEC 62056-21 (IEC 1107) compatible design
- Aluminum housing design with Hard Black Anodize coating
- Compatible with virtually all IEC utility meters and registers
- 18" Coiled cable, rugged Gray Polyurethane extends to 10 Feet
- +5V DC Operating voltage (from PC's USB or PS/2 port)
- Baud rate speed up to 19,200 baud
- 9-Pin D-Sub Female connector and USB Type A for Power
- Powerful magnetic retention

FEATURES:

- Designed for Itron G5, FC200, FC300 handhelds
 - IEC 62056-21 (IEC 1107) compatible design
 - Aluminum housing design with Hard Black Anodize coating
 - Compatible with virtually all IEC utility meters and registers
 - 18" Coiled cable, rugged Gray Polyurethane extends to 10 Feet
 - +5V DC Operating voltage (from handheld's RS232 port)
 - Baud rate speed up to 19,200 baud
 - 12-Pin Hirose connector
 - Powerful magnetic retention
- iP300-300

iP300-330 USB Optical Probe



****NOTE:** Other configurations available upon request.



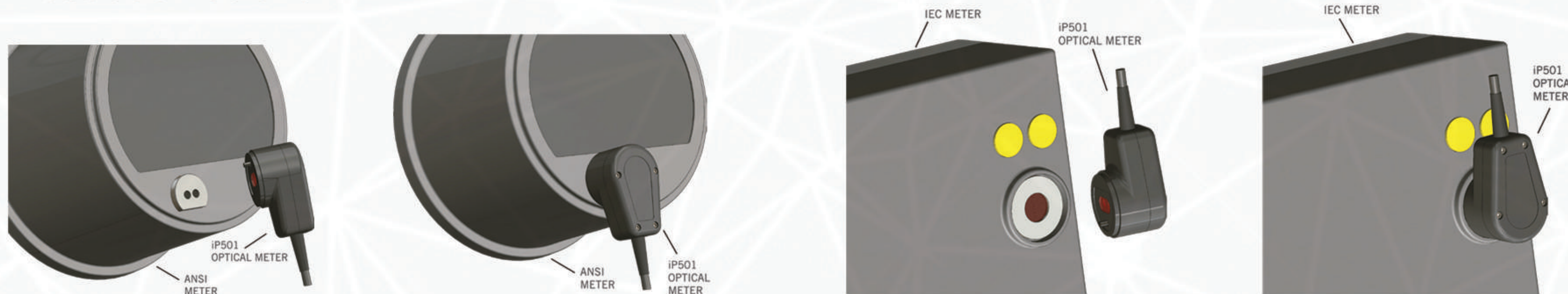


DUAL ANSI/IEC

OPTICAL PROBES

14

The DUAL ANSI/IEC Optical probes are our latest series of optical probes that can be used on both ANSI or IEC electric meters. With this probe design, there is no need to carry 2 different optical probes in the field for reading and programming meters that employ ANSI and IEC optical ports. See 'Meter Attachment Illustration' below:



iP501-330 'S'

Dual ANSI / IEC USB Optical Probe



FEATURES:

- Designed for Desktop and Laptop PC's
- USB 2.0 communication
- ANSI C12.18-2006 and IEC 62056-21 (IEC 1107) compatible design
- Polycarbonate housing design with Glass Fiber reinforcement
- Compatible with virtually all ANSI and IEC utility meters and registers
- Straight cable, 2 meters long, Black PVC
- +5V DC Operating voltage (from PC's USB port)
- Baud rate speed up to 19,200 baud

iP501-330

Dual ANSI / IEC USB Optical Probe



FEATURES:

- Designed for Desktop and Laptop PC's
- USB 2.0 communication
- ANSI C12.18-2006 and IEC 62056-21 (IEC 1107) compatible design
- Polycarbonate housing design with Glass Fiber reinforcement
- Compatible with virtually all ANSI and IEC utility meters and registers
- 18" Coiled cable, rugged gray Polyurethane extends to 10 Feet
- +5V DC Operating voltage (from PC's USB port)
- Baud rate speed up to 19,200 baud
- USB a type of male connector
- Powerful magnetic retention



intelliprobe

WWW.INTELLIPROBE.NET

METER READING SOLUTION

No matter what computer you are using out in the field for your meter data collection you can be sure that we can provide an optical probe for that application.





ACCESSORIES AND OTHER PRODUCTS

16

**iBT-600 Bluetooth
Communications Adapter**



**iBT-600 Bluetooth
Car Charger**



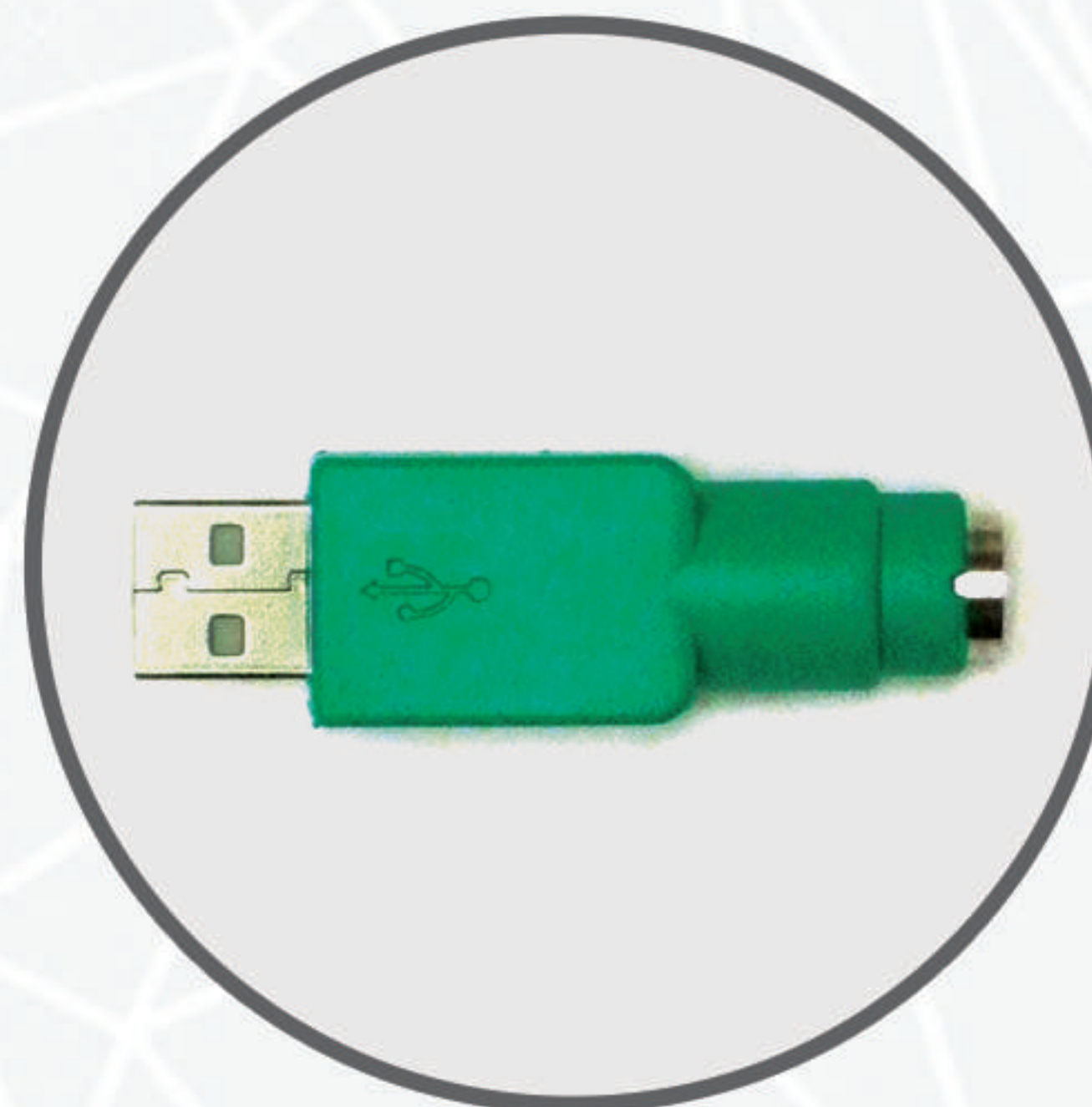
**iBT-600 Bluetooth
USB Charger Cable**



iBT-600 Wall Charger



USB Power Adapter



Nylon Pouch

FRONT



BACK





WWW.INTELLIPROBE.NET
intelliprobe

**YOUR SOLUTION
FOR METER READING**

www.intelliprobe.net
2041 Industrial Drive
McAllen, Texas 78504

Tel: (956) 630-1833
Fax: (956) 630-2241
Toll Free: (877) 634-1833
juan@intelliprobe.net
veronica@intelliprobe.net