



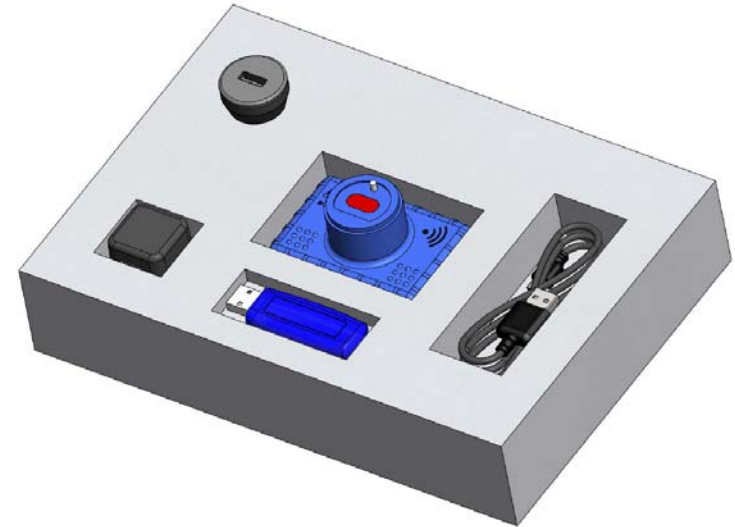
2041 Industrial Drive  
McAllen, Texas 78504  
Tel: 956-630-01833  
Fax: 956-630-2241  
[www.intelliprobe.net](http://www.intelliprobe.net)

## iBT-600 Bluetooth Optical Probe



### PACKAGE CONTENTS

The iBT-600 Bluetooth Probe Kit includes the following:



1. iBT-600 Bluetooth Probe (1)
2. USB Charging Cable, Type A to Mini-B (1)
3. USB Wall Charger Adapter (1)
4. USB Car Charger Adapter (1)
5. USB Dongle Adapter (1)
6. Setup Guide

## User's Guide

## GETTING STARTED

A. Unpack the iBT-600 Bluetooth Optical Probe (item#1).

B. Charge the iBT-600 Battery.

Open the iBT-600 Charger Compartment on the side of the probe and plug the USB Charging cable (item# 2) into the charging connector (See Fig. 1). Plug the other end of the USB cable into the Wall Charger Adapter (item #3), then plug the Wall Charger Adapter into an AC outlet. Allow the optical probe to charge for 8-12 hours prior to using. The iBT-600 can also be charged via the Car Charger Adapter (item #4) or a PC's USB Port (See Fig. 2).

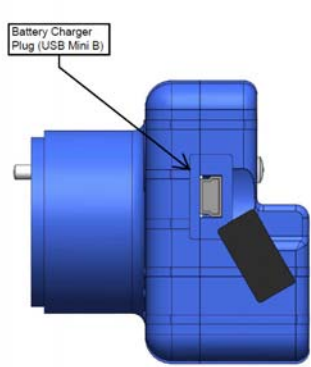


Fig. 1

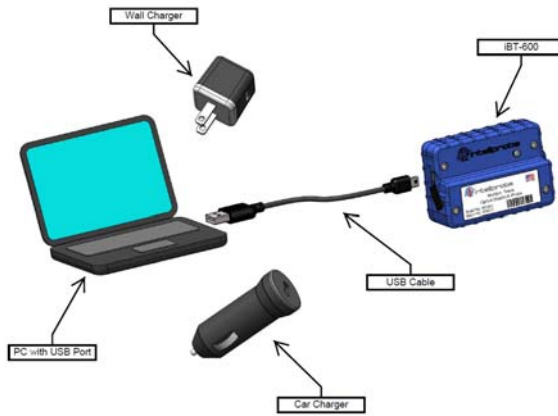


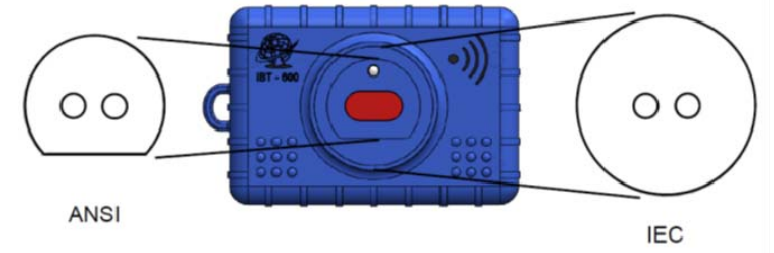
Fig. 2

**Note 1:** The iBT-600 Bluetooth Optical probe cannot be used until the battery is charged for a minimum of 4 hours. It is recommended to charge the unit 8-12 hours in order to allow the user to probe meters for a full working day or up to 10 hours.

**Note 2:** The battery can also be charged via a PC's USB port or USB Car Charger Adapter (item #4).

## iBT-600 PROBE ATTACHEMENT TO METER

The iBT-600 Bluetooth probe is designed to work with both ANSI and IEC electric meters.



Attach the iBT-600 to the meter's optical port as shown below depending on the type of meter being read. Please note the orientation of the probe when attaching to either ANSI or IEC meters. For ANSI meters, attach the probe in the normal position as shown in Fig. 3 and Fig. 4. For IEC meters, attach the probe upside down as shown in Fig. 5 and Fig. 6.

**ANSI Meter:**



Fig. 3

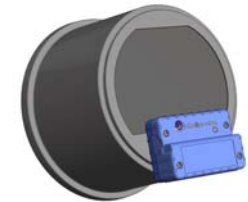


Fig. 4

**IEC Meter:**

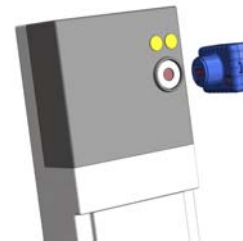


Fig. 5

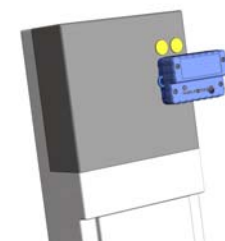


Fig. 6

## SYNCHRONIZE THE iBT-600 BLUETOOTH PROBE WITH THE HOST PC

To establish a connection between the iBT-600 probe and the host PC, the host PC **MUST** be Bluetooth ready (Bluetooth adapter integrated). If so, the PC's Bluetooth adapter must be enabled in order to communicate with the iBT-600 probe. **(Follow Windows instructions on how to enable the Bluetooth adapter in PC).**

Once the PC's Bluetooth adapter is enabled:

1. Attach the iBT-600 Optical Probe to the meter's optical port. The probe will power up by activating the "Power Switch" on front of the unit (See Fig. 7 below). The iBT-600 will power up and the "GREEN" Power LED on the back of the probe should start blinking (See Fig. 8 below).

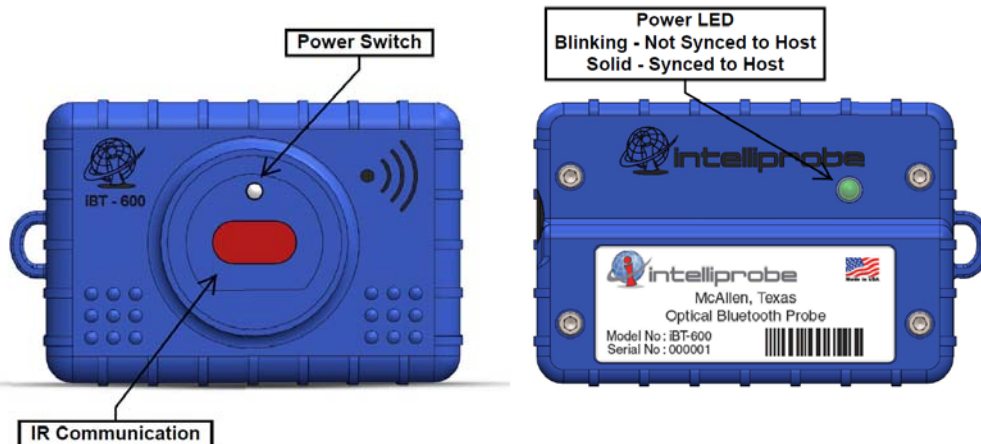


Fig. 7

Fig. 8

2. If the host PC has the Bluetooth adapter ENABLED, the iBT-600 probe should "sync" with the host PC automatically and the iBT-600 probe's LED should turn to SOLID green after a few seconds. If the iBT-600 probe's LED remains blinking, it means the devices are not synchronized and the probe will not be able to communicate to the host PC. (Follow Windows instructions on how to ensure the Bluetooth adapter has been enabled).

## SET UP COMMUNICATIONS (COM) PORT

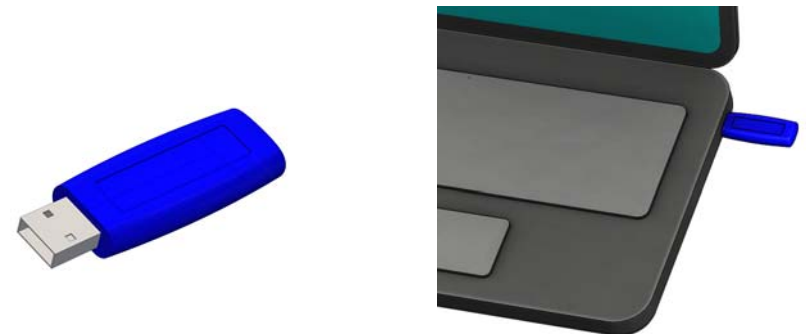
Once the iBT-600 has been synchronized with the HOST PC, the Bluetooth adapter of the host PC is assigned a COM Port number automatically so this COM Port number needs to be set up in the PC's meter reading software being used to communicate with the meter. To find the COM Port number, go to the computer's Control Panel/Device Manager and click on PORTS (COM & LPT). Under PORTS, a "Standard Serial over Bluetooth link (COM x)" should appear. The "x" indicates the COM port number.

Once both, the iBT-600 optical probe and host PC are synchronized and the proper COM Port selected in the meter reading software, then communication can start between the probe, the meter and host PC.

## OPTIONAL COMMUNICATION VIA A "USB DONGLE ADAPTER"

A USB Dongle Adapter (item# 5) can also be used as a Bluetooth connection between the iBT-600 probe and the host PC.

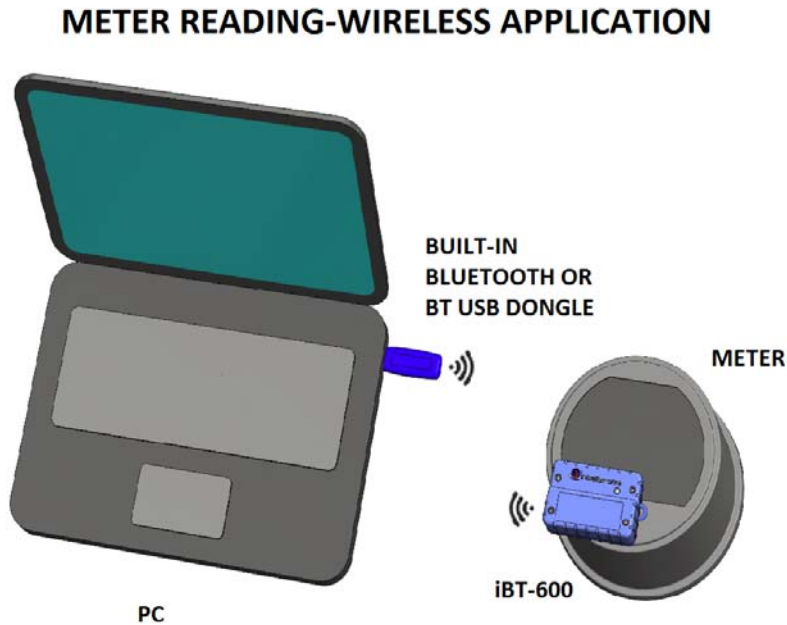
1. Plug the USB Dongle Adapter into any available USB port in the PC. The PC should detect it and install the drivers for it to make it work as a VCP Port. Once drivers are installed, the PC will assign a COM Port number to the USB Dongle Adapter just like it did with the PC's internal Bluetooth Adapter previously.



## OPTIONAL COMMUNICATION VIA A “USB DONGLE ADAPTER” (cont.)

2. With the iBT-600 probe connected to the meter, the USB Dongle Adapter will also “sync” with the probe. When it does, the probe’s green LED should be lit SOLID.
3. Once the USB Dongle Adapter and iBT-600 probe are in “Sync”, go to the computer’s Control Panel/Device Manager and click on PORTS (COM & LPT) to see what PORT number was assigned to the USB Dongle Adapter. It should be listed as a USB Serial Port (COM x) where “x” is the PORT number.
4. Go into the meter reading software and select the proper USB communication’s port. In this case, it will be the COM Port assigned for the USB Dongle Adapter.

Now, wireless communication can start between the iBT-600 probe and the meter and host PC via the USB Dongle Adapter.



## CARING AND HANDLING OF THE iBT-600 PROBE

While in the field not reading meters, it is recommended the iBT-600 probe be attached and secured to a belt clip (*accessory sold separately*) from its featured “Loop” on its side.

This will prevent the unit from being dropped and expose it to possible physical damage.



Try to avoid dropping the unit or subjecting it to strong shocks or vibrations. When the iBT-600 probe is not used for an extended period, it is recommended the unit be stored in a Nylon Pouch (*accessory sold separately*).

## ACCESSORIES (OPTIONAL)



Carabiner Keychain



"On Belt Loop"



Nylon Pouch

## SERVICE AND SUPPORT

For additional information and support please call us toll free at 877-634-1833 or at 956-630-1833 or check our website [www.intelliprobe.net](http://www.intelliprobe.net).

## LIMITED WARRANTY INFORMATION

Here's some information about your warranty....

Or other company related information.

This page was intentionally left blank



2041 Industrial Drive  
McAllen, Texas 78504  
Tel: 956-630-01833  
Fax: 956-630-2241  
[www.intelliprobe.net](http://www.intelliprobe.net)