

iP503-331 "ANSI" '2S'

"USB Micro B" Optical Probe Android Tablet



FEATURES

- New ANSI compatible design
- New Bi-Color LED Indicator for TX / RX communication signals
- New Smaller Housing design made of Polycarbonate and/or High Impact ABS
- Compatible with ANSI C12.18-1996 or 2006 standards
- Designed for Android based devices such as Tablets and other compatible devices
- Android USB (with Micro Adapter as shown), USB 2.0 communication (no Micro Adapter)
- Compatible with virtually all utility meters, registers and recorders
- Powered by computer's or Tablet's USB port (w/Micro B Adapter installed)
- Straight cord, 6 feet long (2 Meters)
- Even lighter weight for reduced fatigue, wear and tear
- Polycarbonate RED filter to enhance infrared (IR) communications
- Powerful retention magnets in probe head for attaching to meter's optical port



OVERVIEW

The NEW iP503-331 ANSI USB Micro B Optical Probes are designed for reading and programming ANSI electrical power meters. These optical probes come with a 'USB Type A Female to USB Micro B Adapter' to connect to Android based devices such as Tablets and any other compatible devices. By removing the USB Micro Adapter, these optical probes can also be used for standard USB PCs or Tablets employing USB 2.0 communication.

In addition, they incorporate a new smaller housing design that make them even lighter weight but still rugged made of Polycarbonate Glass Fiber Reinforcement material and/or High Impact ABS.

Their optical circuitry supports ANSI C12.18-1996 or 2006 communications protocols. They are compatible with virtually all ANSI utility meters, registers and recorders. They derive power from the USB ports (Micro B) Adapter so there is no need for external Battery Packs or AC Adapters.

These probes work with Windows Devices or Android Devices by installing appropriate Drivers that create a Virtual Serial Port to allow communication between the meter and the manufacturer's Windows based or Android software.

The NEW iP503-331 ANSI Optical Probes solve problems relating to mechanical wear-out due to the demanding environment under which probes are constantly subjected to. We address this problem using the most rugged mechanical and electrical design in the industry. These probes are designed with an almost indestructible Polycarbonate head or High Impact ABS that contains powerful magnets that ensure a good retention when attached to the meter's optical port. They are also designed with a high-endurance polyurethane molded cable 18" long that withstands the outside rugged environment. This claim is backed with an aggressive warranty and service policy.

TECHNICAL SPECIFICATIONS

Mechanical Specifications

Physical Size	Length 2.14", Width 1.38", Height 1.14"
Cable Type	Straight, Black or Gray PVC Jacket
Cable Length	6.0 Feet (2 Meters) Long
Connector	USB Micro B plug Adapter
Weight	Complete assembly weighs a maximum of 5.6 ounces (0.35 lbs)
Finish	Probe Head Light Gray Polycarbonate or ABS
Reliability	One-year (1) warranty for parts and labor

Electrical Specifications

Signal	Acts as a device to a host PC USB port
LED Indicator	TX (Red), RX (Green)
Compatibility	ANSI C12.18-1996 or 2006
Power Req.	+5V DC powered by USB port
Data Rate	Controlled by meter for OPTOCOM interface, 0-19,200 Baud for non-OPTOCOM meters
Optical	880 nm bi-directional IR interface
Software	Drivers for multiple platforms; Windows 98/2000/XP/VISTA/Win7/Win10/Win Mobile/ Mac OS-9, Mac OS-X, Linux 2-40 and greater, Android

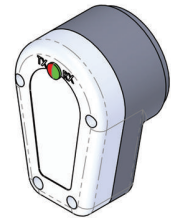
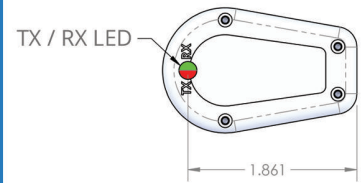
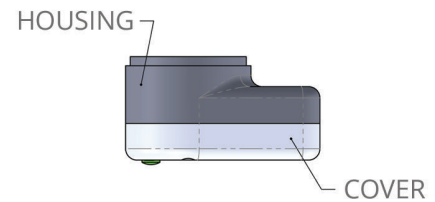
Environmental Specifications

Temperature	Operating -30° to 60° C; Storage -40° to +85° C
Ruggedness	Meets the requirements of a numbers of tests including those for Thermal Shock, Humidity, Water Resistance, RF Susceptibility, ESD, Drop, Random Vibration, Solar Radiation, Salt, Fog and Low Pressure.

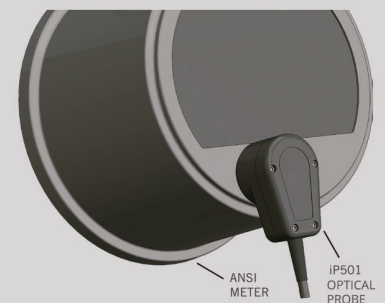
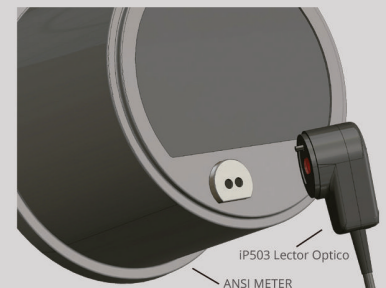
PC Interface	Android Micro B (Adapter installed), USB 2.0 Port (Adapter removed)
---------------------	---

Some Compatible Meters

Elster ABB	2550, 2650, All Alpha, Alpha T, A3, Alt, A1R, A1R+, 2430, others
Aptech/Robinton	LPR1, LPR2, LPR3, SR500, TR403, TR804
General Electric	KC901, KTC-901, KV, KV2, KV2-C, others
IUSA	Varios
Siemens (Landis&Gyr)	CTR101, CTR102, DC, DCR, DD, DG100, DT, DX, DXR, SD100, SM101, SM301, TMC101, LINC, DCRMA, DDMA, S4 family, AX Series, RX series, MAXSYS 2410, MAXSYS 2510, Quad 4, others
Metricom	C
Nexus	1260 Series, otros
PSI	S100, S200, Quad 4
Pwr Measurement	ION 7000 series, 8000 series
Itron (Schlumberger)	Datastar, Fulcrum, MT100, MT200, Quantum, Q1000, Sentinel, Centron, Vectron
Synergistics	B40
Transdata	EMA, Mark V
Others	To be added



ILLUSTRATION



www.intelliprobe.net

***NOTE: Please follow the procedure "IP501 USB Probe Drivers Installation Instructions" to install the optical probe windows driver software in PC prior to using the IP503 USB optical probes.

www.Intelliprobe.net
2041 Industrial Drive, McAllen, Texas 78504

Tel: 956-630-1833
Fax: 956-630-2241