



IP501/IP503-330 USB PROBE
DRIVERS INSTALLATION
INSTRUCTIONS

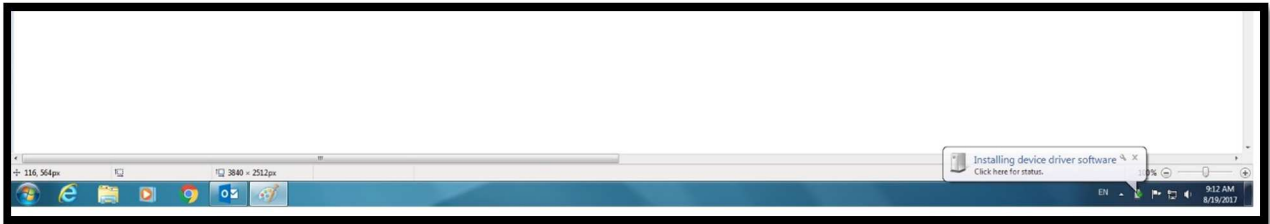


iP501/iP503-330 USB PROBE DRIVERS INSTALLATION INSTRUCTIONS

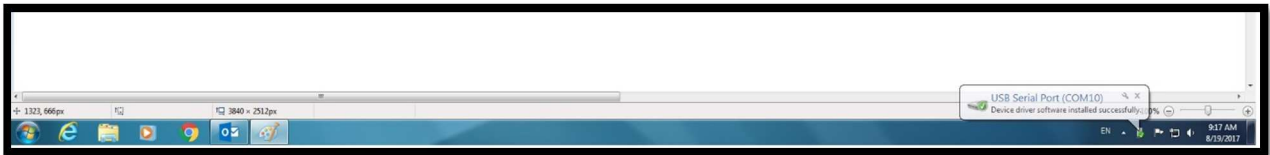
A. INSTALLING DRIVERS

The CD-ROM enclosed contains the Windows System Virtual COM Port Drivers for the iP501/iP503 USB Optical Probe. **These drivers need to be installed in the PC prior to using the USB Optical Probe.**

1. Connect the iP501/iP503 USB Probe to any USB port on the PC. The USB drivers will start downloading automatically to the PC (providing the PC's System Windows Update Settings are set to receive and install updates automatically). If this is the case, the following message will appear at the bottom of the PC screen (task bar):



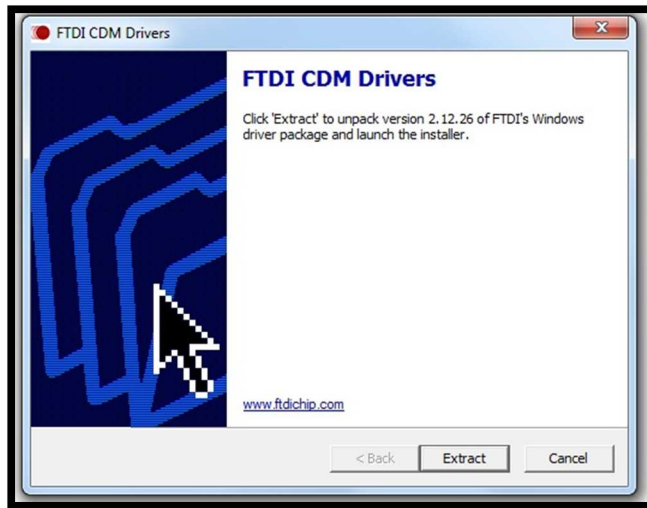
Wait until the drivers finish installing. If the drivers are installed successfully, the following message will appear:



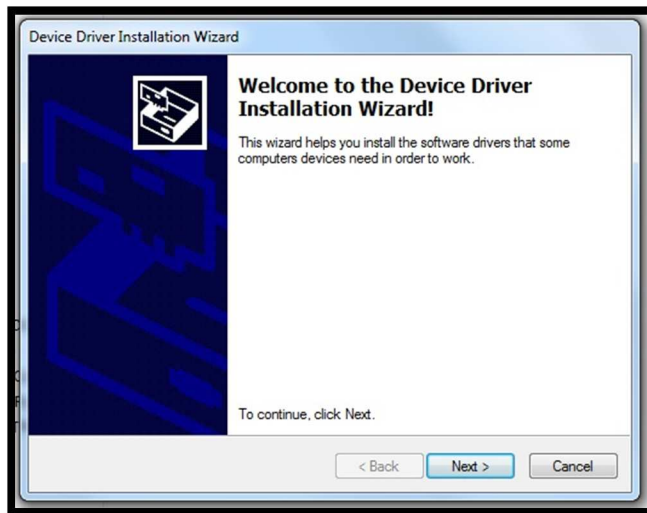
The optical probe is ready to be used at this time. Now the USB optical probe's COM port needs to be setup in the meter reading software. Follow the steps in Section B.

NOTE: If for some reason the drivers do not install automatically, the drivers need to be installed manually from the CD provided. **The drivers can also be downloaded and installed manually from the FTDI website: <http://www.ftdichip.com/Drivers/VCP.htm>**

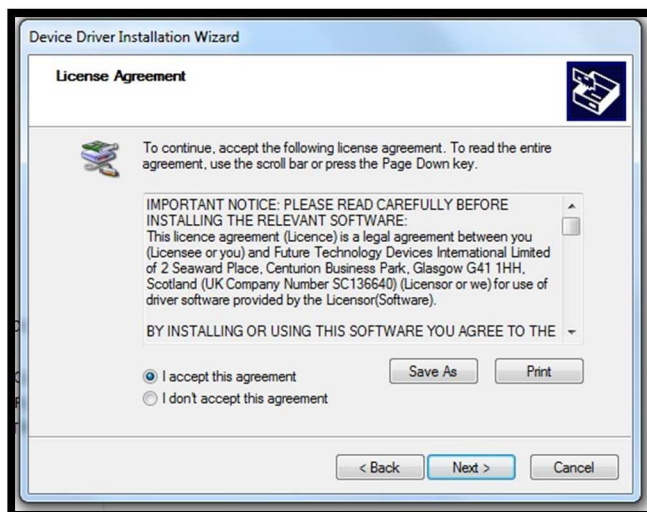
2. To install the USB drivers manually, disconnect the optical probe from the PC and follow the next steps:
 - A. Insert the CD into the computer's CD-ROM drive.
 - B. Open the CD Drive and double-click on the file named "**CDM21216_Setup.exe** and the following screen should appear:



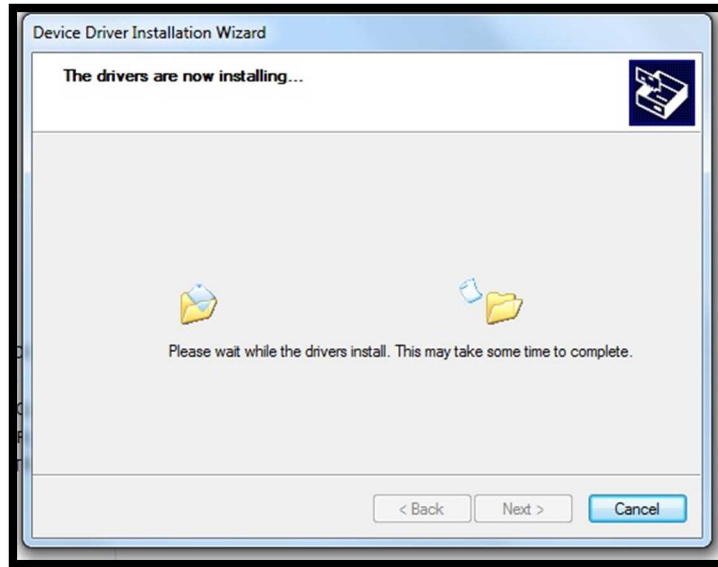
C. Click “Extract” to start installing the drivers. The following screen should appear:



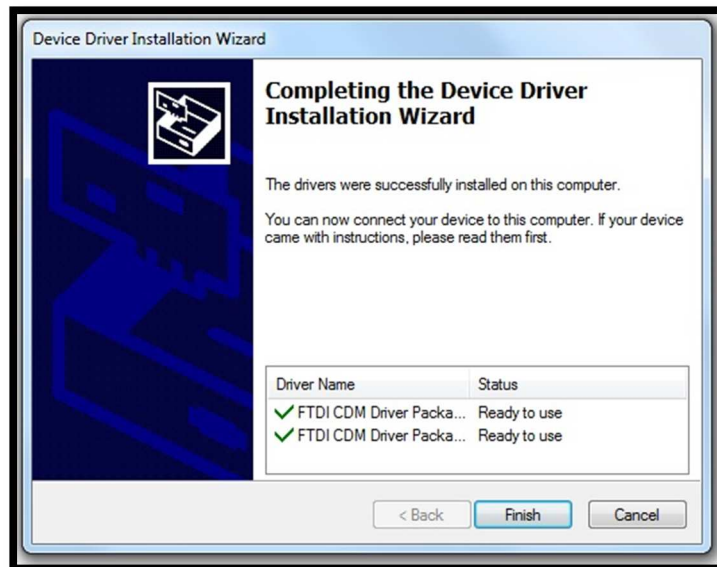
D. Click “Next” to continue. The following screen should appear:



E. Select “I accept the agreement” and click “Next.” The following screen should appear:



F. Wait until the drivers are installed completely. The following screen should appear:



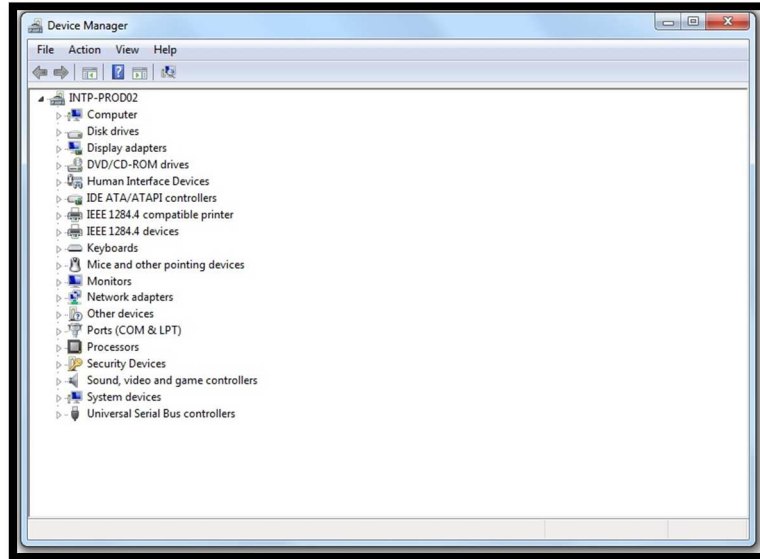
G. Click “Finish.” At this point the drivers are installed and the optical probe can now be connected to the PC.

B. USB PROBE HARDWARE INTERFACE

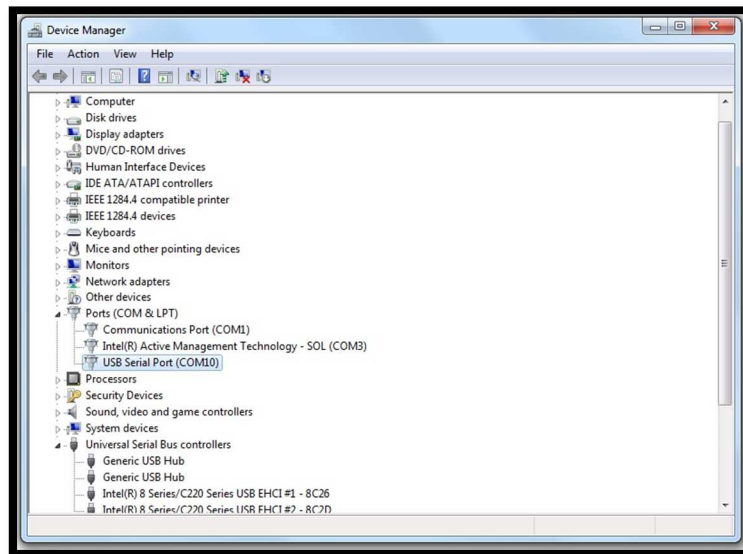
Before starting using the USB optical probe, the probe COM Port needs to be identified so that the proper COM port can be selected in the Meter Reading software being used.

1. Connect the USB optical probe to any USB port on the PC.

2. Go to the PC's Control Panel/System/Hardware/Device Manager to see what port number the PC assigned to the USB optical probe. See screen below:



3. Click "Ports (COM & LPT)." The following screen should appear:



4. Under "Ports" the USB Optical Probe should be listed as "USB Serial Port (COM X)" where the (X) means the Port Number automatically assigned by the PC and it can be any number. This COM port number will be selected in the Meter Reading Software to start communication between the electric meter and the USB optical probe.

NOTE: If any other COM Port Number is selected in the Meter Reading software, the USB Probe will not communicate with the meter. Also, even though the PC assigned this USB COM Port number automatically, this COM port number can be changed to whatever COM port number is desired as long as it does not interfere (conflict) with any other USB devices being used by the PC.

***** Please contact Intelliprobe at 956-630-1833 with any questions or further assistance with this installation *****