

iP503-333 "ANSI" "USB Type C" Optical Probe



FEATURES

- New ANSI compatible design
- New Bi-Color LED Indicator for TX / RX communication signals
- New Smaller Housing design made of Polycarbonate w/Glass Reinforcement
- Compatible with ANSI C12.18-1996 or 2006 standards
- Designed for Windows or Android based devices such as Tablets and other compatible devices
- Overmolded USB C Male Connector
- Compatible with virtually all utility meters, registers and recorders
- Powered by computer's or Tablet's USB C port
- Straight cable, 3.5 feet long (1 Meter), Polyurethane Flame-retardant
- Even lighter weight for reduced fatigue, wear and tear
- Polycarbonate RED/BLUE filter to enhance infrared (IR) communications
- Powerful retention magnets in probe head to ensure strong adhesion to meter's optical port



OVERVIEW

The NEW iP503-333 ANSI USB Optical Probes are designed for reading and programming ANSI electrical power meters. These optical probes are designed with an overmolded 'USB Type C Male Connector' to connect to Android or Windows based devices such as Tablets and any other compatible devices. In addition, they incorporate a new, smaller housing design that make them even lighter weight but still rugged with its Polycarbonate Glass Fiber Reinforcement material.

Their optical circuitry supports ANSI C12.18-1996 or 2006 communications protocols. They are compatible with virtually all ANSI utility meters, registers and recorders. They derive power from the USB C ports so there is no need for any additional Adapters or Converters for its function.

These probes work with Windows or Android Devices by installing appropriate Drivers that create a Virtual Serial Port to allow communication between the meter and the manufacturer's Windows based or Android software.

The NEW iP503-333 ANSI Optical Probes solve problems related to mechanical wear-out due to the demanding environment under which probes are constantly subjected to. We address this problem using the most rugged mechanical and electrical design in the industry. These probes are designed with an almost indestructible Polycarbonate head that contains powerful magnets that ensure a good retention when attached to the meter's optical port. They are designed with a Straight Polyurethane, Flame-retardant, Black cable 3.5 Feet or 6 Feet long (1 meter or 2 meters depending on customer's specifications) that withstands the outside rugged environment. This claim is backed with an aggressive warranty and service policy.

TECHNICAL SPECIFICATIONS

iP503-333 "ANSI"

Mechanical Specifications

Physical size	Length 2.14", Width 1.38", Height 1.14"
Cable Type	Straight, Black, Polyurethane, Flame-Retardant Jacket
Cable Length	3.5 Feet (1 Meters) or 6 feet (2 meters)
Connector	USB C Male Connector
Weight	Complete assembly weighs a maximum of 2.5 ounces (0.15 lbs)
Finish	Probe Head Light Gray Polycarbonate
Reliability	One-year (1) warranty for parts and labor

Electrical Specifications

Signal Spec.	Acts as a device to a host PC USB port
LED Indicator	TX (Red), RX (Green)
Compatibility	ANSI C12.18-1996 or 2006
Power Req.	+5V DC powered by USB-C port
Data Rate	Controlled by meter or 0 - 57,600 baud
Optical	890 nm bi-directional IR interface
Software	Drivers for multiple platforms; Windows 98/2000/XP/VISTA/Win7/Win10/Win Mobile/Mac OS-9, Mac OS-X, Linux 2-40 and greater, Android

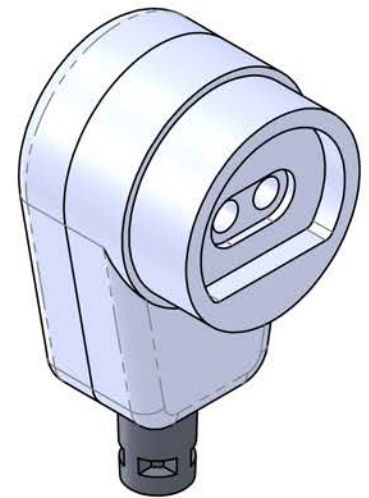
Environmental Specifications

Temperature	Operating -30° to 60° C; Storage -40° to +85° C
Ruggedness	Meets the requirements of a numbers of tests including those for Thermal Shock, Humidity, Water Resistance, RF Susceptibility, ESD, Drop, Random Vibration, Solar Radiation, Salt, Fog and Low Pressure.

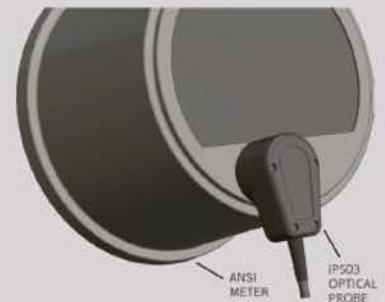
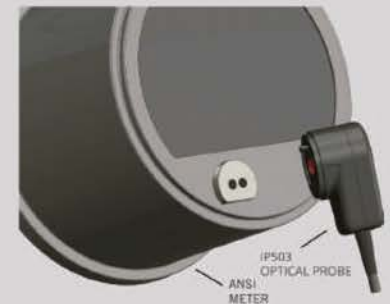
PC Interface	Windows or Android USB-C
--------------	--------------------------

Some Compatible Meters

ABB (Elster)	2550, 2650, All Alpha, Alpha T, A3, A1t, A1R, A1R+, 2430, others
Aptech/Robinton	LPR1, LPR2, LPR3, SR500, TR403, TR804
General Electric	KV, KV2, KV2-C, others
IUSA	Various
Siemens (Landis&Gyr)	CTR101, CTR102, DC, DCR, DD, DG100, DT, DX, DXR, SD100, SM101, SM301, TMC101, LINC, DCRMA, DDMA, S4 family, AX series, RX series, MAXSYS 2410, MAXSYS 2510, Quad 4, others
Nexus	1262 / 1272 Series, others
PSI	S100, S200, Quad 4
Pwr Measurement	ION 7000 series, 8000 series
Itron (Schlumberger)	Datastar®, Fulcrum®, Quantum®, Sentinel®, Centron®, Vectron®, OpenWay®
Synergistics	B40
Transdata	EMA, Mark V
Others	More to be added



METER ATTACHMENT ILLUSTRATION



***NOTE: Please follow the procedure "iP501/iP503 USB Probe Drivers Installation Instructions" to install the optical probe windows driver software in PC prior to using the optical probes.



intelliprobe WWW.INTELLIPROBE.NET

PROBE MECHANICAL SPECIFICATIONS

iP503-333 "ANSI"

